



S5-91 (单针/Single Needle)

S5-92 (双针/Double Needle)

**产品使用说明书&产品零件图册**  
Manual book & parts book

**JACK 杰克**

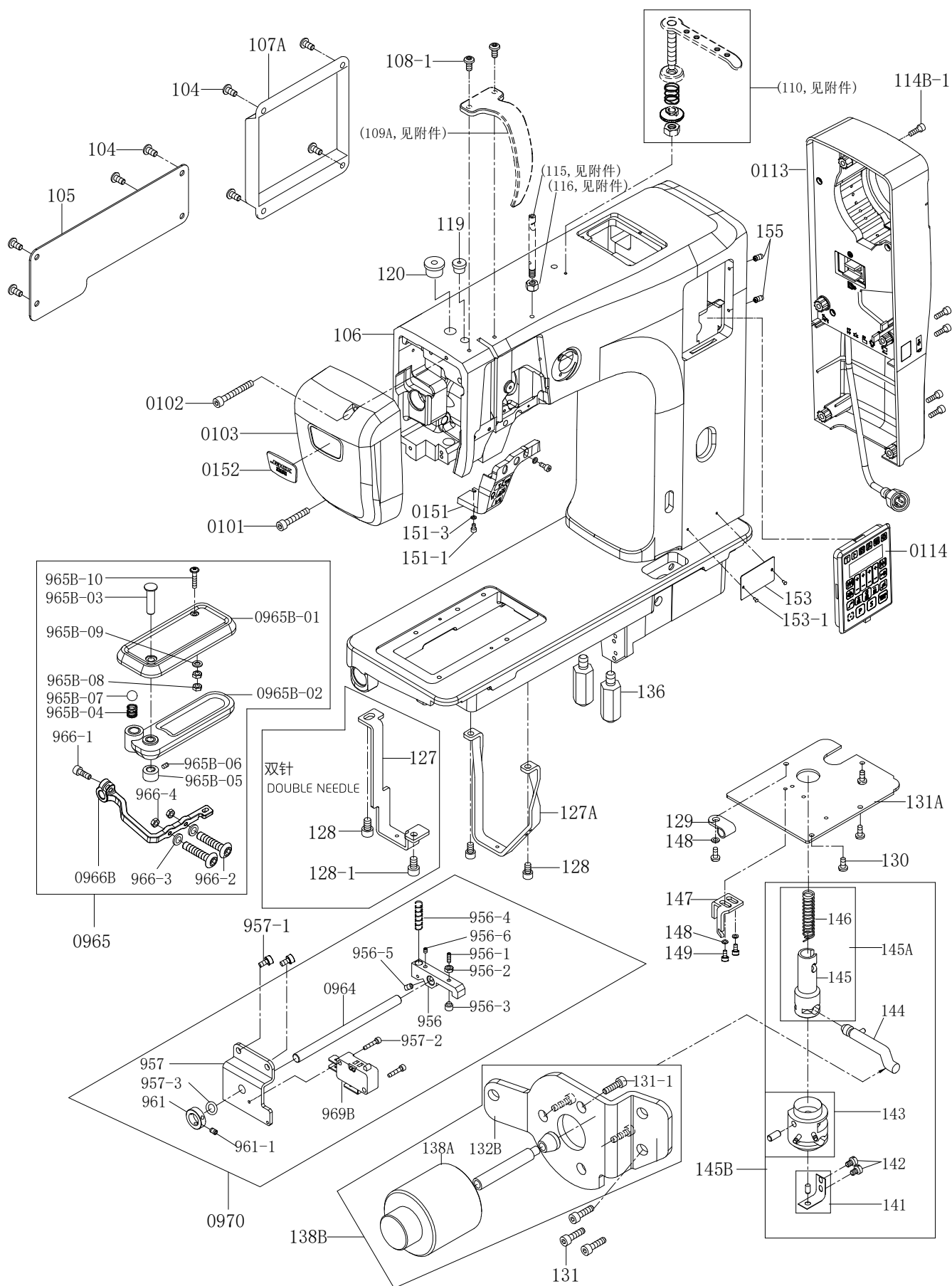


# 零件手册/Parts book

1.	本体机构 Arm bed and it's accessories-----	01
2.	压棒机构 Presser foot bar mechanism-----	05
3.	天平及针棒摇动台机构 Take-up lever & needle bar rocking mechanism-----	07
4.	缝线压力调整机构 Upper thread tension regulation mechanism-----	09
5.	主轴传动机构 Upper & Main shaft transmission mechanism-----	11
6.	下送料、剪线机构 Lower feed & thread trimming mechanism-----	13
7.	轮前、上边心机构（被动送料） Roller presser foot & upper side shaft mechanism-----	15
8.	右边座机构 Right side bracket mechanism-----	17
9.	单针中座及下倒缝机构（S5-91） Single needle central bracket mechanism-----	21
10.	双针左边座及中座机构（S5-92） Double needle left side bracket & central bracket mechanism-----	23
11.	双针倒针机构（S5-92） Double needle reverse stitching mechanism-----	27
12.	随机附件 Accessories-----	29
13.	电器连接图 Electricity lelments fig-----	31
14.	双针针位组零件明细 Gauge parts list-----	32

# 1 本体机构

## Arm bed and it's accessories



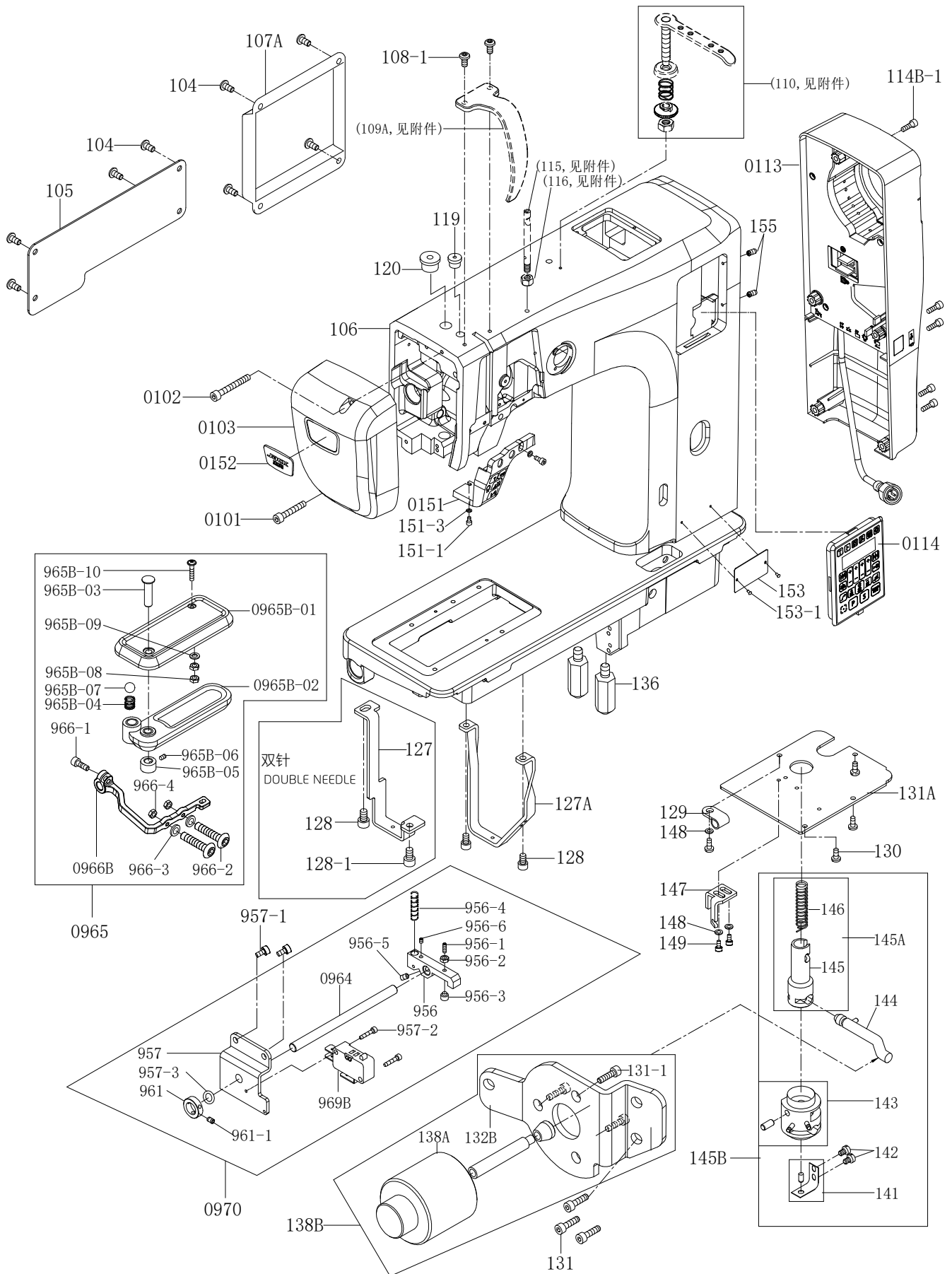
# 1 本体机构

## Arm bed and it's accessories

序号 NO.	件号 Part No.	零部件名称 PartName	零件描述 Description	数量 Amt.		备注
				S5-91	S5-92	
0101	S05083	内六角圆柱头螺钉M5×30(镀镍)	Screw pan M5×30(Nickelpated)	1	1	
0102	421S13046	内六角圆柱头螺钉M5×45(镀镍)	Screw pan M5×45(Nickelpated)	1	1	
0103	930000153	面板	Face palte	1	1	喷漆
104	S17883	内六角平圆头螺钉M4×8 (镀镍)	Screw pan M4×8(Nickelpated)	8	8	
105	930000151	松线防护板	Cover	1	1	喷漆
0106	930000149	机壳组件	Machine shell components	1	1	喷漆
107A	930000055	大防沙板	Cover	1	1	喷漆
108-1	S17884	内六角平圆头螺钉M5×10(镀镍)	Screw pan M5×10(Nickelpated)	2	2	
0113	15573000200	控制器组件	Machine electronic control	1	1	
114B-1	S05955	内六角圆柱头螺钉M5×20	Screw pan M5×20	5	5	
0114	15573000100	操作面板组件	Panel	1	1	
119	155211003	油盖	Rubber plug	1	1	
120	155211004	压棒盖	Rubber plug	1	1	
127	155212003	支架B	Bracket B	0	1	
127A	155212004	支架	Bracket	1	1	
128	S05962	内六角圆柱头螺钉M6×12	Screw pan M6×12	2	3	
128-1	S05951	内六角圆柱头螺钉M5×10	Screw pan M5×10	0	1	
129	155211015	R线夹12.7	R type clamp 12.7	1	1	
130	1550NS11001	一字圆柱头螺钉M5×10	Screw pan M5×10	4	4	
131	S05962	内六角圆柱头螺钉M6×12	Screw pan M6×12	3	3	
131A	155212042	底盘座	Bottom cover	1	1	
136	1552NS30001	六角钢	Bed leg	2	2	
138B	950800129	抬压脚电磁铁组件部装	Presser foot lifter electromagnet assembly	1	1	
145B	15520200700	膝控抬压脚(组件)	Knee lifter lever	1	1	
147	155212008	拉簧座	Tension spring seat	1	1	
148	W01146	平垫圈M5	Flat washer M5	3	3	
149	S05959	内六角圆柱头螺钉M5×8	Screw pan M5×8	2	2	
0151	15573000300	机头灯组件	Light switch assembly	1	1	
151-1	S05941	内六角圆柱头螺钉 M3×6	Screw pan M3×6	2	2	
151-3	W01144	平垫圈M3	Flat washer M3	2	2	
0152	155701004	商标牌	Trade mark	1	1	
153	155237001	空白型号牌	Type number plate	1	1	
153-1	R03008	型号牌铆钉2.5×5	Rivet 2.5×5	2	2	
155	S10072	内六角凹端紧定螺钉M4×10	Screw pan M4×10	2	2	
956	155209018	开关压板	Switch plate	1	1	
956-1	S10073	内六角凹端紧定螺钉M4×16	Screw pan M4×16	1	1	
956-2	N01103	六角螺母M4	Nut M4	1	1	
956-3	155226009	限位柱	Limit column	1	1	
956-4	155227004	栓销弹簧	Pin spring	1	1	
956-5	S10080	内六角凹端紧定螺钉M5×6	Screw pan M5×6	1	1	
956-6	S10074	内六角凹端紧定螺钉M4×4	Screw pan M4×4	1	1	
957	155212038	倒缝扳手座	Reverse feed lever fixing plate	1	1	
957-1	S05951	内六角圆柱头螺钉M5×10	Screw pan M5×10	2	2	
957-2	S05938	内六角圆柱头螺钉M3×14	Screw pan M3×14	2	2	
957-3	O01151	O型橡胶密封圈	O-ring	1	1	
961	155008007	定环	Stationary ring	1	1	
961-1	1550NS14001	内六角凹端紧定螺钉M6×0.75×6	Screw pan M6×0.75×6	2	2	
0964	155702001	倒缝扳手轴	Reverse feed lever shaft	1	1	
0965	950800228	倒缝扳手组件	Reverse wrench assembly	0	0	

# 1 本体机构

## Arm bed and it's accessories



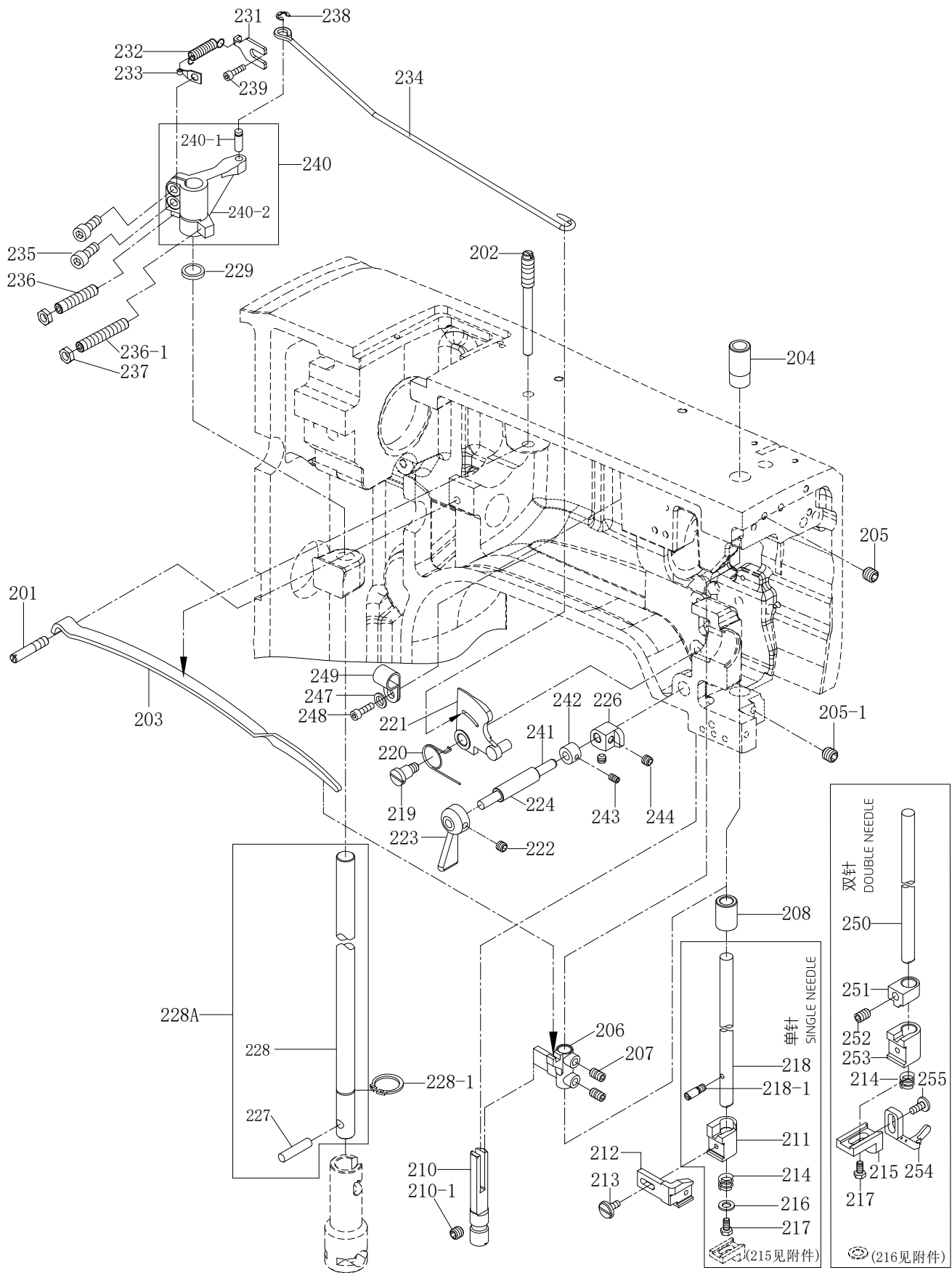
# 1 本体机构

## Arm bed and it's accessories

序号 NO.	件号 Part No.	零部件名称 PartName	零件描述 Description	数量 Amt.		备注
				S5-91	S5-92	
0965B-01	155744001	倒缝扳手上盖	Cover for reverse wrench	1	1	
0965B-02	15574400200	旋转扳手组件	Rotary wrench assembly	1	1	
965B-03	155226010	固定销	Dowel pin	1	1	
965B-04	155227011	弹簧	Spring M4×5	1	1	
965B-05	155208001	锁圈	Lock ring	1	1	
965B-06	S10074	内六角凹端紧定螺钉M4×4	Screw pan M4×4	1	1	
965B-07	155209020	钢珠Sφ8	Steel ball Sφ8	1	1	
965B-08	N01105	六角螺母M3	Nut M3	2	2	
965B-09	W01144	平垫圈M3	Flat washer M3	1	1	
965B-10	S17902	内六角圆头带垫螺钉M3×16(镀镍)	Screw pan M3×16(Nickelpated)	1	1	
0966B	155705001	倒缝扳手连杆	Reverse wrench connecting rod	1	1	
966-1	S05951	内六角圆柱头螺钉M5×10	Screw pan M5×10	1	1	
966-2	S04234	内六角平圆头螺钉M4×14	Screw pan M4×14	2	2	
966-3	W01145	平垫圈M4	Flat washer M4	2	2	
966-4	N01103	六角螺母M4	Nut M4	2	2	
969B	15523001300	点动开关	Inching switch	1	1	
0970	950800229	倒缝点动开关组件部装	Reverse inching switch assembly	0	0	

## 2 压棒机构

### Presser foot bar mechanism





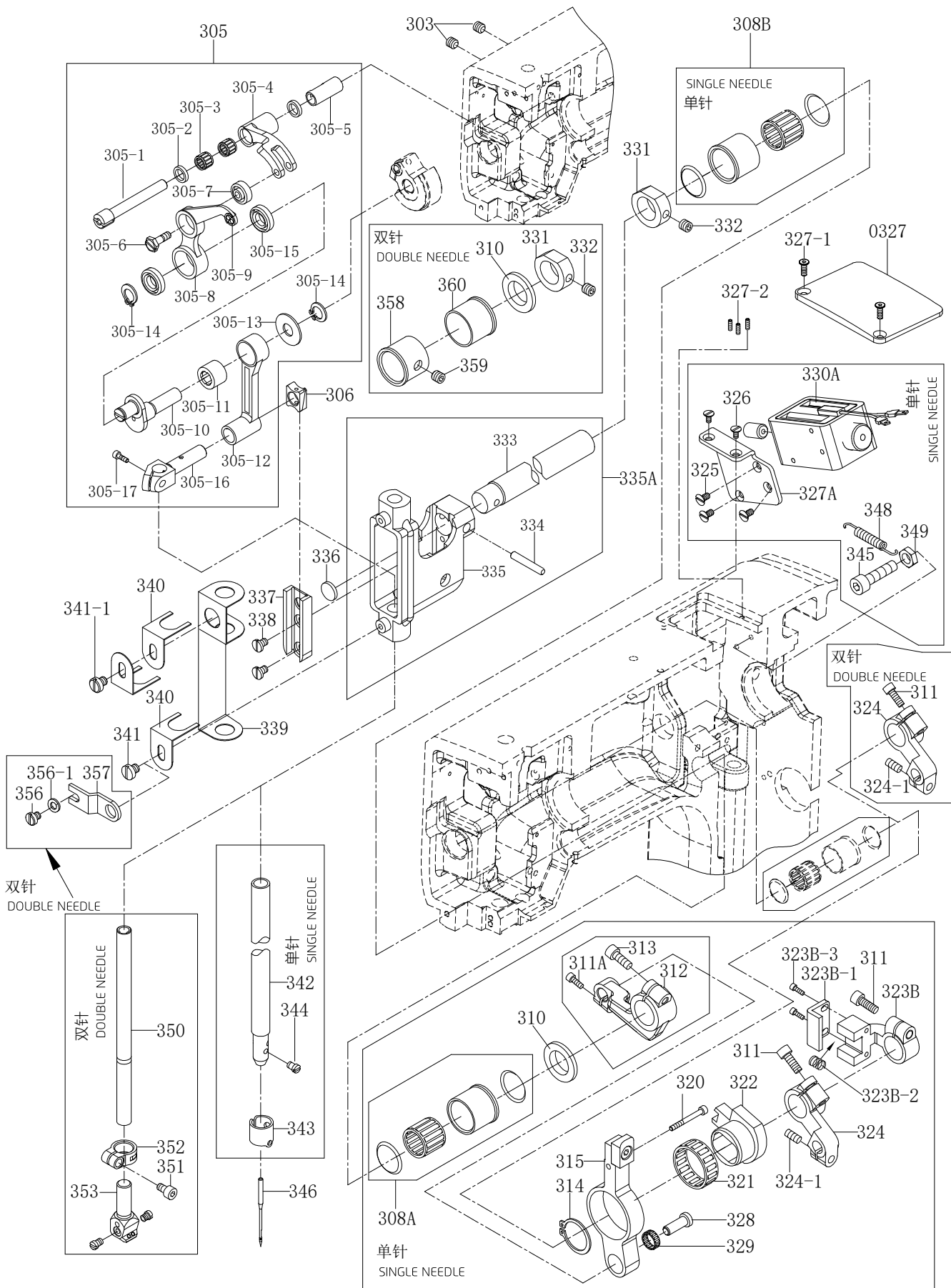
## 2 压棒机构

### Presser foot bar mechanism

序号 NO.	件号 Part No.	零部件名称 PartName	零件描述 Description	数量 Amt.		备注
				S5-91	S5-92	
201	1550NS11002	一字无头螺钉	Screw	1	1	
202	155211005	一字无头调压螺钉	Screw	1	1	
203	155212009	弹片压板	Shrapnel plate	1	1	
204	155003001	压棒上套管	Upper casing of pressure bar	1	1	
205	S10080	内六角凹端紧定螺钉M5×6	Screw pan M5×6	1	1	
205-1	S10079	内六角锥端紧定螺钉M5×5	Screw pan M5×5	1	1	
206	155001001	压棒固定座	Setting seat of pressure bar	1	1	
207	1550NS14001	内六角凹端紧定螺钉M6×0.75×6	Screw pan M6×0.75×6	2	2	
208	155003002	压棒下套管	Running casing of pressure bar	1	1	
210	155009001	导轨棒	Guide rods	1	1	
210-1	S10081	内六角凹端紧定螺钉M5×8	Screw pan M5×8	1	1	
211	155201004	轮钱下座	Front seat	1	0	
212	155201005	轮钱连接座	Connecting seat	1	1	
213	1550NS11012	一字圆柱头螺钉	Screw	1	1	
214	155027001	弹簧	Spring	1	1	
215	155009002	顶针座	Thimble seat	0	1	
216	155228010	平垫圈	Flat washer	1	0	
217	1552NS12002	外六角螺丝	Bolt	1	1	
218	155202001	压棒	Pressure bar	1	0	
218-1	1550NS15001	螺钉	Screw	1	0	
219	1550NS11003	一字圆柱头螺钉	Screw	1	1	
220	155027002	弹簧	Spring	1	1	
221	155004001	沙拉心座组	Bobbin thread tensionasm	1	1	
222	S10080	内六角凹端紧定螺钉M5×6	Screw pan M5×6	1	1	
223	930000148	压棒提杆	Lifting rod of pressure bar	1	1	喷漆
224	155203001	压棒提杆套管	Lifting sleeve of pressure bar	1	1	
226	155201006	压棒提升器	Lifter of pressure bar	1	1	
228A	155002001	压脚长轴组件	Presser foot long axis	1	1	
228-1	H03066	轴用弹性挡圈12	Circlips for shaft 12	1	1	
229	155028001	调整垫片	Washer	1	1	
231	155012001	弹簧固定板	Spring fixing plate	1	1	
232	155227003	离合拉簧	Clutch spring	1	1	
233	155012002	弹簧固定板	Spring fixing plate	1	1	
234	155227001	脚弓连接杠杆	Arch connecting lever	1	1	
235	S05952	内六角圆柱头螺钉M5×12	Screw pan M5×12	2	2	
236	S12031	内六角圆柱端紧定螺钉M6×30	Screw pan M6×30	1	1	
236-1	S09157	内六角圆柱端紧定螺钉M6×35	Screw pan M6×35	1	1	
237	N01104	六角螺母M6	Nut M6	2	2	
238	H05026	开口挡圈4	E rings 4	1	1	
239	S05967	内六角圆柱头螺钉M6×8	Screw pan M6×8	1	1	
240	155004003	上下输送臂	Upper and lower conveying arm	1	1	
241	155202002	压棒提杆轴	Pressure rod lifting shaft	1	1	
242	155208001	锁圈	Lock ring	1	1	
243	S10074	内六角凹端紧定螺钉M4×4	Screw pan M4×4	1	1	
244	S10080	内六角凹端紧定螺钉M5×6	Screw pan M5×6	2	2	
247	W01145	平垫圈M4	Flat washer M4	1	1	
248	S05949	内六角圆柱头螺钉 M4×8	Screw pan M4×8	1	1	
249	155211010	油管护架	Tubing guard	1	1	
250	155202020	压棒(双针)	Pressure bar(Double needle)	0	1	
251	155303001	送料轮钱上座(双针)	Front upper seat of feeding wheel(Double needle)	0	1	
252	S10080	内六角凹端紧定螺钉M5×6	Screw pan M5×6	0	1	
253	155301003	轮钱下座(双针)	Below seat of wheel (Double needle)	0	1	
254	155301005	双针带护手靠边	Pull aside with hand guard (Double needle)	0	1	
255	1550NS11013	一字圆柱头螺钉	Screw	0	1	

### 3 天平及针棒摇动台机构

Take-up lever & needle bar rocking mechanism



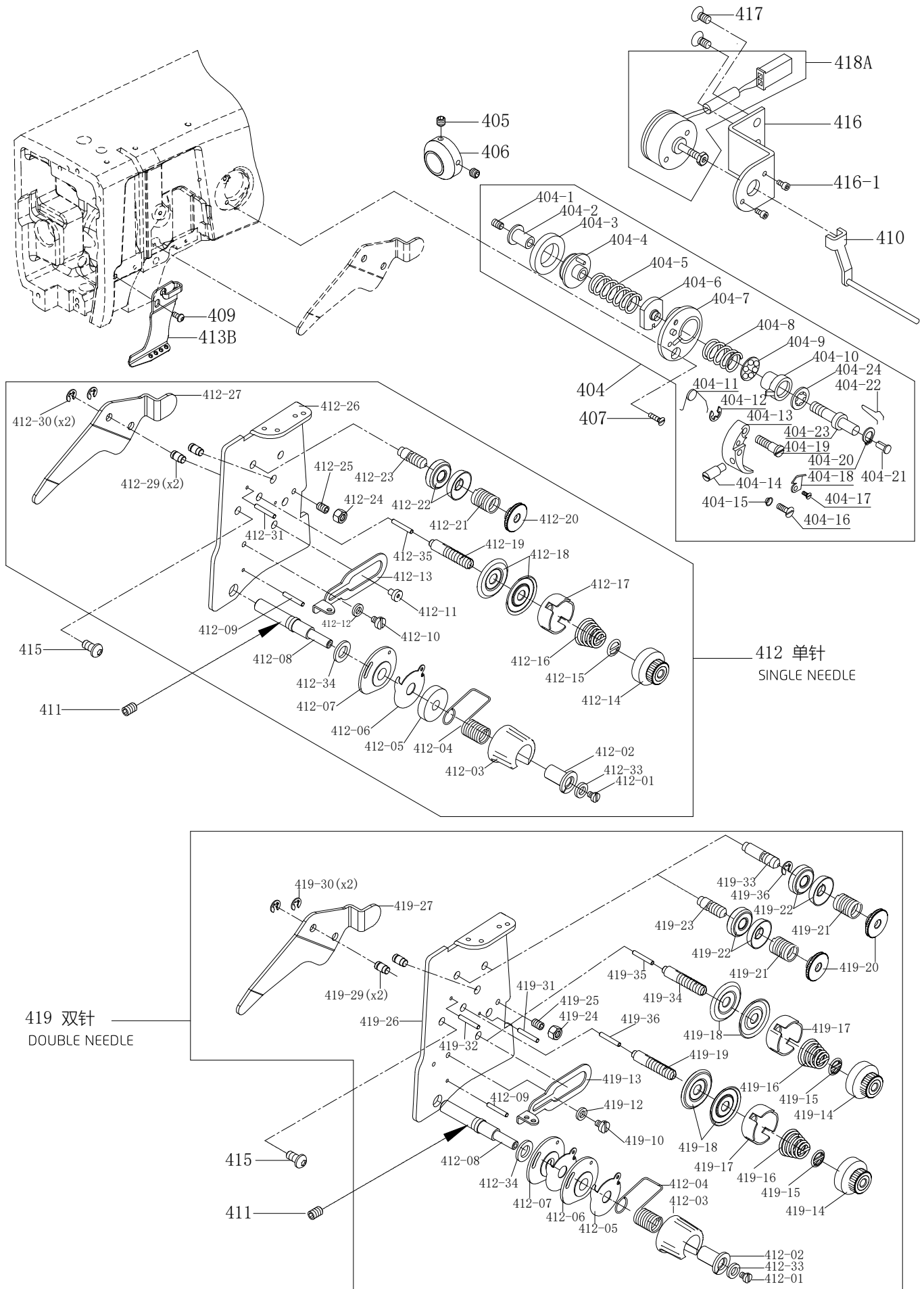
### 3 天平及针棒摇动台机构

#### Take-up lever & needle bar rocking mechanism

序号 NO.	件号 Part No.	零部件名称 PartName	零件描述 Description	数量 Amt.		备注
				S5-91	S5-92	
303	S10081	内六角凹端紧定螺钉M5×8	Screw pan M5×8	2	2	
305	15523800200	单针天秤组件	Thread take-up asm(Single needle)	1	0	
305	15523800100	双针天秤组件	Thread take-up asm(Double needle)	0	1	
306	155009003	针棒道引滑块	Needle bar guide slider	1	1	
308A	15512400100	培林套管组件(ø23)	Casing of bearing(ø23)	1	0	
308B	15512400200	培林套管组件(ø24)	Casing of bearing(ø24)	1	0	
310	155012008	垫片	Washer	1	2	
311	S05964	内六角圆柱头螺钉M6×16	Screw pan M6×16	2	1	
311A	S05952	内六角圆柱头螺钉 M5×12	Screw pan M5×12	1	0	
312	155201007	针送支臂	Needle delivery arm	1	0	
313	S05953	内六角圆柱头螺钉M5×14	Screw pan M5×14	1	0	
314	H03070	轴用弹性挡圈24	Circlips for shaft 24	1	0	
315	155205012	凸轮连杆	Cam connecting rod	1	0	
320	1552NS13006	轴肩螺钉	Screw	1	0	
321	155024001	滚针培林	Needle bearing	1	0	
322	155209001	滑块凸轮	Slider cam	1	0	
323B	155209008	滑块凸轮导向座	Slide cam guide seat	1	0	
323B-1	155212010	固定块	Fixed block	1	0	
323B-2	155227004	弹簧	Spring	1	0	
323B-3	S17895	内六角平圆头螺钉M3×6	Screw pan M3×6	2	0	
324	155201010	滑块凸轮摆杆	Swinging rod of slider cam	1	1	
324-1	S10080	内六角凹端紧定螺钉M5×6	Screw pan M5×6	1	1	
325	S12026	内六角沉头螺钉M4×6	Screw pan M4×6	3	0	
326	S12027	内六角沉头螺钉M4×8	Screw pan M4×8	2	0	
0327	930000150	盖板	Cover plate	1	1	喷漆
327-1	S12024	内六角沉头螺钉M4×12(镀镍)	Screw pan M4×12(Nickelpated)	2	2	
327-2	S10072	内六角凹端紧定螺钉M4×10	Screw pan M4×10	3	3	
327A	155212012	电磁铁固定板	Electromagnet fixed plate	1	0	
328	155026001	固定销(短)	Pin (short)	1	0	
329	155024002	滚针培林	Needle bearing	1	0	
330A	15523001900	针摆电磁铁组件	Needle pendulum electromagnet	1	0	
331	155008001	固定环	Retaining ring	1	2	
332	1550NS14001	内六角凹端紧定螺钉M6×0.75×6	Screw pan M6×0.75×6	1	2	
335A	15520101100	针棒座组件	Needle bar support frame	1	1	
336	155023001	油棉	Oil cotton	1	1	
337	155009004	针棒连接器导槽	Needle bar connecting link guide	1	1	
338	1550NS11013	一字圆柱头螺钉	Screw	2	2	
339	155023002	油棉	Oil cotton	1	1	
340	155012017	油棉压板	Pressboard of oil cotton	3	3	
341	1550NS11013	一字圆柱头螺钉(薄)	Screw	1	1	
341-1	1550NS11019	一字圆柱头螺钉(厚)	Screw	1	1	
342	155002002	单针针棒	Needle bar	1	0	
343	155012004	针棒套环	Ring clamp	1	0	
344	1557NS11003	机针螺钉(进口)	Screw of needle (Imported)	1	0	
345	S05952	内六角圆柱头螺钉M5×12	Screw pan M5×12	1	0	
346	155217001	机针(INDP×5#16)	Needle INDP×5#16	1	2	
348	155227002	拉簧	Tension spring	1	0	
349	N01106	六角螺母M5	Nut M5	1	0	
350	155002003	双针针棒	Needle bar(Double needle)	0	1	
351	S05949	内六角圆柱头螺钉M4×8	Screw pan M4×8	0	1	
352	155008002	针棒套环	Needle bar clamp ring	0	1	
353	15531700300	针榴组件(2.4规格)	Pin chuck 2.4	0	1	
356	1550NS11007	一字半圆头螺丝M5×8	Screw M5×8	0	1	
356-1	W01146	平垫圈M5	Flat washer M5	0	1	
357	155012005	针棒座固定板	Guide plate	0	1	
358	155303002	摆针轴左套管	Left casing	0	1	
359	S10089	内六角凹端紧定螺钉M6×12	Screw pan M6×12	0	1	
360	155003005	摆针轴右套管	Right casing	0	1	

# 4 缝线压力调整机构

Upper thread tension regulation mechanism



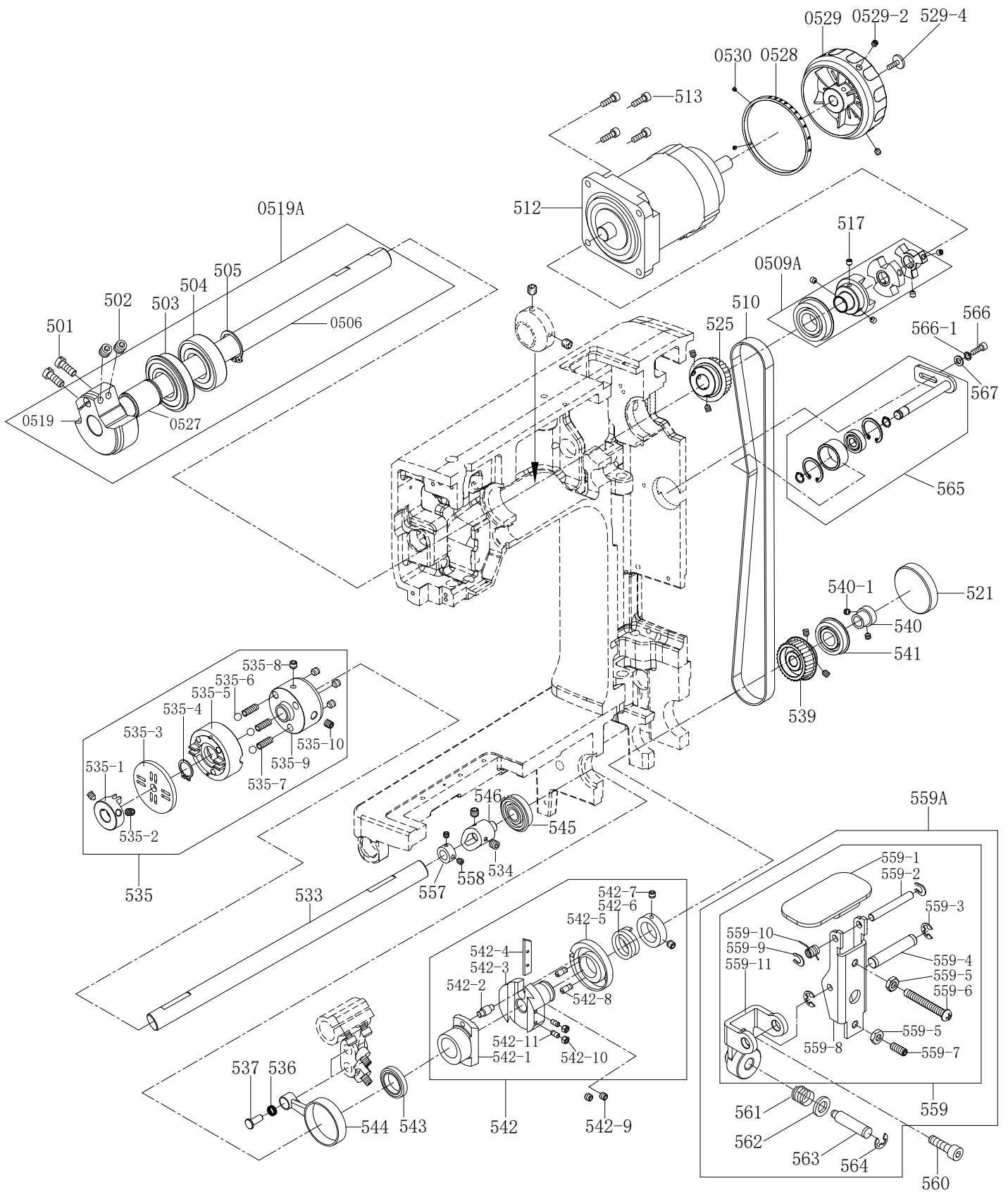
#### 4 缝线压力调整机构

##### Upper thread tension regulation mechanism

序号 NO.	件号 Part No.	零部件名称 PartName	零件描述 Description	数量 Amt.		备注
				S5-91	S5-92	
404	15521300100	绕线器组件	Bobbin winder unit	1	1	
405	S10086	内六角凹端紧定螺钉M6×8	Screw pan M6×8	2	2	
406	155208003	锥形传动轮	Conical drive wheel	1	1	
407	1552NS17002	开槽沉头螺钉(镀镍)	Screw(Nickelpated)	1	1	
409	S17884	内六角平圆头螺钉M5×10(镀镍)	Screw pan M5×10(Nickelpated)	1	1	
410	15521201400	松线销组件	Tension releasing pin asm	1	1	
411	S10081	内六角凹端紧定螺钉M5×8	Screw pan M5×8	1	1	
412	15521300200	单针沙拉组件	Single needle Thread tension assembly	1	0	
413B	155213003	过线板	Thread tension guide plate	1	1	
415	S17883	内六角平圆头螺钉M4×8(镀镍)	Screw pan M4×8(Nickelpated)	1	1	
416	155212015	松线阀座	Solenoid valve fixing plate	1	1	
416-1	S05940	内六角圆柱头螺钉M3×5	Screw pan M3×5	2	2	
417	S12029	内六角沉头螺钉M5×10	Screw pan M5×10	2	2	
418A	15523001800	电磁阀组件(松线)	Solenoid valve (loose thread)	1	1	
419	15521300300	双针沙拉组件	Double needle Thread tension assembly	0	1	

# 5 主轴传动机构

Upper & main shaft transmission mechanism



## 5 主轴传动机构

### Upper & main shaft transmission mechanism

序号 NO.	件号 Part No.	零部件名称 PartName	零件描述 Description	数量 Amt.		备注
				S5-91	S5-92	
501	1550NS11001	一字圆柱头螺钉M5×10	Screw pan M5×10	2	2	
502	1550NS14001	内六角凹端紧定螺钉M6×0.75×6	Screw pan M6×0.75×6	2	2	
503	B02018	深沟球轴承(60/22ZZNR)	Ball bearing(60/22ZZNR)	1	1	
504	B04021	深沟球轴承(60/22ZZ)	Ball bearing(60/22ZZ)	1	1	
505	H03035	轴用弹性挡圈22	Circlips for shaft 22	1	1	
0509A	15570300600	联轴器组件(带轴承)	Coupling components	1	1	
510	155735005	同步带(加宽)	Synchronous belt	1	1	
512	15523000400	电机	Motor	1	0	
512	15523001600	电机(双针)	Motor(Double needle)	0	1	
513	S05955	内六角圆柱头螺钉M5×20	Screw pan M5×20	4	4	
517	S10092	内六角凹端紧定螺钉M6×0.75×8	Screw pan M6×0.75×8	5	5	
0519A	15571000100	凸轮组件	Cam asm	1	1	
521	155011002	保护盖	Protection cap	1	1	
525	15573500300	上齿形带轮(加宽)组件	Timing wheel (Up)	1	1	
0528	155703001	刻度环	Scale ring	1	0	
0528	155703009	刻度环(双针)	Scale ring(Double needle)	0	1	
0529	930000167	手轮	Handwheel	1	0	喷漆
0529	930000384	手轮(双针)	Double needle Handwheel	0	1	喷漆
0529-2	S10086	内六角凹端紧定螺钉M6×8	Screw pan M6×8	2	2	
529-4	S17903	内六角圆头带垫螺钉M6×10(镀镍)	Screw pan M6×10(Nickelpated)	1	1	
0530	207S14009	内六角平端紧定螺钉M3×3	Screw pan M3×3	2	2	
533	155202018	万向连接轴(单带)	Universal connecting shaft	1	1	
534	1550NS14001	内六角凹端紧定螺钉M6×0.75×6	Screw pan M6×0.75×6	2	2	
535	15520101400	离合器组件	Clutch assembly	1	1	
536	155024002	滚针培林	Needle bearing	1	1	
537	155026002	固定销(26)	Dowel pin (26)	1	1	
539	15573500400	下齿形带轮(加宽)组件	Timing wheel (down)	1	1	
540	155003007	轴承套管(右)	Casing of bearing(right)	1	1	
540-1	1550NS14001	内六角凹端紧定螺钉M6×0.75×6	Screw pan M6×0.75×6	2	2	
541	155024006	滚珠培林 (BB6203ZZNR)	Ball bearing (BB6203ZZNR)	1	1	
542	15500100300	凸轮组件	Cam asm	1	1	
542-9	S10086	内六角凹端紧定螺钉M6×8	Screw pan M6×8	2	2	
543	155024014	滚珠培林 (61906ZZ)	Ball bearing (61906ZZ)	1	1	
544	155005002	连杆	Connecting rod	1	1	
545	155024013	滚珠培林 (BB6202ZZNR)	Ball bearing (BB6202ZZNR)	1	1	
546	155201015	剪线凸轮	Trimming cam	1	1	
557	155208005	定环	Fixed ring	1	1	
558	1550NS14001	内六角凹端紧定螺钉M6×0.75×6	Screw pan M6×0.75×6	2	2	
559A	15521200700	送料调整按钮(部装)	Feeding adjustment button assembly	1	1	
560	S05943	内六角圆柱头螺钉M4×10	Screw pan M4×10	1	1	
565	15523500100	带轮调节组件	Pulley regulate assembly	1	1	单带
566	S05952	内六角圆柱头螺钉M5×12	Screw pan M5×12	1	1	单带
566-1	W02001	弹簧垫圈M5	Spring washer M5	1	1	单带
567	W01146	平垫圈M5	Flat washer M5	1	1	单带





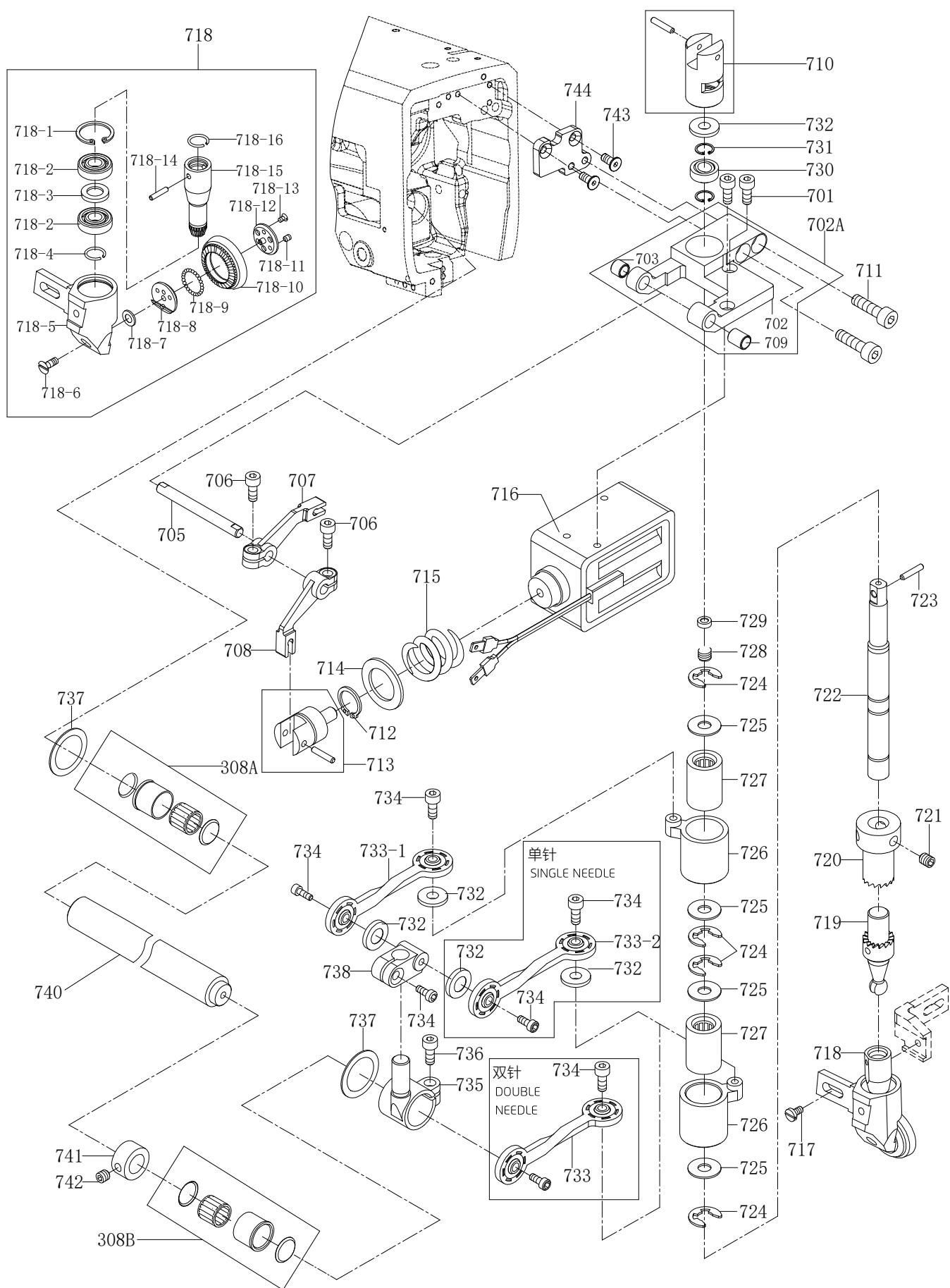
## 6 下送料、剪线机构

## Lower feed &amp; thread trimming mechanism

序号 NO.	件号 Part No.	零部件名称 PartName	零件描述 Description	数量 Amt.		备注
				S5-91	S5-92	
308A	15512400100	培林套管组件(ø23)	Casing of bearing(ø23)	1	1	
308B	15512400200	培林套管组件(ø24)	Casing of bearing(ø24)	1	1	
308C	15520300300	培林套管组件(ø25)	Casing of bearing(ø25)	1	1	
601	H03067	轴用弹性挡圈15	Circlips for shaft 15	1	1	
602	155012008	垫片	Washer	1	1	
603	155202006	下送料轴	Feed rocker shaft	1	1	
604	155004005	万向连接头	Crank	1	0	
604-1	155004006	万向连接头	Crank	0	1	
606	S05952	内六角圆柱头螺钉M5×12	Screw pan M5×12	1	1	
607	155004007	万向连接座	Clamp	1	1	
607-1	S05943	内六角圆柱头螺钉M4×10	Screw pan M4×10	1	1	
608	1550NS11016	一字圆柱头螺钉(长)	Screw	2	1	
610	155026002	固定销(26)	Dowel pin (26)	1	1	
611	155024002	滚针培林	Needle bearing	2	2	
612	155005003	连杆	Connecting rod	1	1	
613A	155204001	左单向输送支臂	Left one-way delivery arm	1	1	
614	1550NS14001	内六角凹端紧定螺钉M6×0.75×6	Screw pan M6×0.75×6	3	3	
615	155008004	固定环	Retaining ring	1	1	
617	S05954	内六角圆柱头螺钉M5×16	Screw pan M5×16	4	4	
618	155204003	剪线摆杆架	Swinging rod	1	1	
619	S05951	内六角圆柱头螺钉M5×10	Screw pan M5×10	1	2	
619-1	S05943	内六角圆柱头螺钉M4×10	Screw pan M4×10	0	2	
620	S10080	内六角凹端紧定螺钉M5×6	Screw pan M5×6	1	2	
621	155226004	摆杆销 (短)	Pendulum pin	2	2	
621-1	H05912	开口挡圈5	E rings 5	2	2	
621-2	W01147	平垫圈M6	Flat washer M6	2	2	
624	155212018	拉杆	Pull rod	1	1	
625	155226005	拉簧销	Tension spring pin	1	1	
626	155227005	拉簧	Tension spring	1	0	
626S	155327001	双针拉簧	Double needle tension spring	0	1	
627	S05959	内六角圆柱头螺钉M5×8	Screw pan M5×8	1	1	
630A	15520400800	离合器臂 (组件)	Clutch arm (asm)	1	1	
631	155202007	离合器轴	Clutch shaft	1	1	
632	155209010	剪线座	Trimmer	1	1	
633	S05959	内六角圆柱头螺钉M5×8	Screw pan M5×8	1	1	
634	S05957	内六角圆柱头螺钉M5×30	Screw pan M5×30	2	2	
635	S12026	内六角沉头螺钉M4×6	Screw pan M4×6	2	2	
636	155212019	电磁铁固定板	Electromagnet fixing plate	1	1	
637	S05951	内六角圆柱头螺钉M5×10	Screw pan M5×10	2	2	
638	15523000600	电磁铁(剪线)	Electromagnet (trimming)	1	1	
640	155226014	固定销 (22)	Dowel pin(22)	1	1	
641	155204004	右单向输送支臂	Right one-way delivery arm	1	1	
642	155205005	双针左摆杆	Double needle left swing rod	0	1	
643	155226006	摆杆销	Pendulum pin	0	1	
644	W01145	平垫圈M4	Flat washer M4	0	2	
645	155212020	切线连接块一	Tangent connecting plate I	0	1	
646	155212021	切线连接块二	Tangent connecting plate II	0	1	
647	W01146	平垫圈M5	Flat washer M5	2	2	
648	S10078	内六角凹端紧定螺钉M5×4	Screw pan M5×4	1	1	

# 7 轮前、上边心机构 (被动送料)

Roller presser foot & upper side shaft mechanism



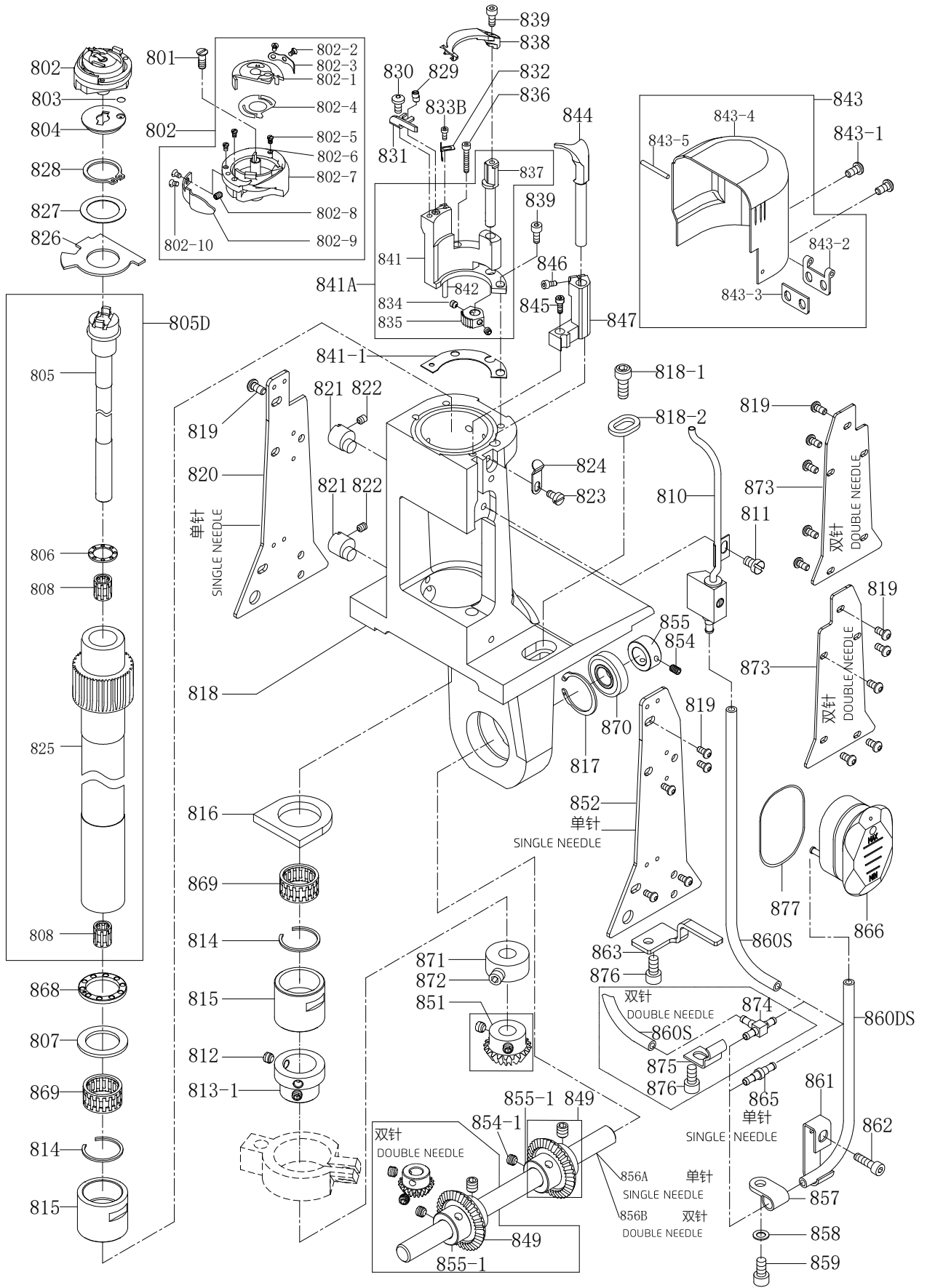
## 7 轮钱、上边心机构 (被动送料)

## Roller presser foot &amp; upper side shaft mechanism

序号 NO.	件号 Part No.	零部件名称 PartName	零件描述 Description	数量 Amt.		备注
				S5-91	S5-92	
308A	15512400100	培林套管组件(ø23)	Casing of bearing(ø23)	1	1	
308B	15512400200	培林套管组件(ø24)	Casing of bearing(ø24)	1	1	
701	S05949	内六角圆柱头螺钉M4×8	Screw pan M4×8	2	2	
702A	15520101600	轮钱倒针座组件	Holder of backstitch asm	1	1	
705	155226007	固定销	Dowel pin	1	1	
706	S05951	内六角圆柱头螺钉M5×10	Screw pan M5×10	2	2	
707	155204009	离合器后摆杆	Clutch rear swing lever	1	1	
708	155204010	离合器前摆杆	Clutch front swing lever	1	1	
710	155209004	万向轴承座	Universal bearing holder	1	1	
711	S05960	内六角圆柱头螺钉M6×30	Screw pan M6×30	2	2	
712	H03068	轴用弹性挡圈16	Circlips for shaft 16	1	1	
713	155209005	摆杆连接块	Connecting block of swing bar	1	1	
714	155212022	垫片	Washer	1	1	
715	155227006	压簧	Compression spring	1	1	
716	15523000700	电磁铁 (轮钱离合)	Backstitch solenoid valve	1	1	
717	1550NS11012	一字圆柱头螺钉	Slotted head screw	1	1	
718	15522500300	轮钱组件	Roller press asm	1	1	
719	155225004	轮钱倒针下离合器	Lower clutch of backstitch	1	1	
720	155225005	轮钱倒针上离合器	Upper clutch of backstitch	1	1	
721	1550NS14001	内六角凹端紧定螺钉M6×0.75×6	Screw pan M6×0.75×6	2	2	
722	155202026	滚轮联接轴上节 配进口	Roller coupling shaft (upper)	1	1	
723	P03056	弹性销 3×10	Elastic pin 3×10	1	1	
724	H05913	开口挡圈8	E-type buckle 8	4	4	
725	155012011	调整垫片	Adjusting washer	4	4	
726	155203005	单向轴承座 配进口	One-way bearing holder	2	2	
727	155724002	滚针培林 进口	Needle bearing	2	2	
728	155227010	压簧	Compression spring	1	1	
729	155212023	垫圈	Washer	1	1	
730	155024011	万向培林	Universal bearing	1	1	
731	155012013	C型扣环	C-shaped buckle	2	2	
732	155023003	油棉垫	Oil cotton pad	5	5	
733	155005005	万向连杆	Universal connecting rod	0	1	
733-1	155205002	万向连杆A	Universal connecting rod A	1	1	
733-2	155205003	万向连杆B	Universal connecting rod B	1	0	
734	S05943	内六角圆柱头螺钉M4×10	Screw pan M4×10	5	5	
735	155004005	万向连接头	Crank	1	1	
736	S05952	内六角圆柱头螺钉M5×12	Screw pan M5×12	1	1	
737	155012008	垫片	Washer	1	2	
738	155004007	万向连接座	Clamp	1	1	
740	155202009	上边心轴	Shaft	1	1	
741	155008001	固定环	Retaining ring	1	1	
742	1550NS14001	内六角凹端紧定螺钉M6×0.75×6	Screw pan M6×0.75×6	1	1	
743	S12030	内六角沉头螺钉M5×12	Screw pan M5×12	2	2	
744	155701006	轮钱座固定块	Link block	1	1	

# 8 右边座机构

Right side barcket mechanism



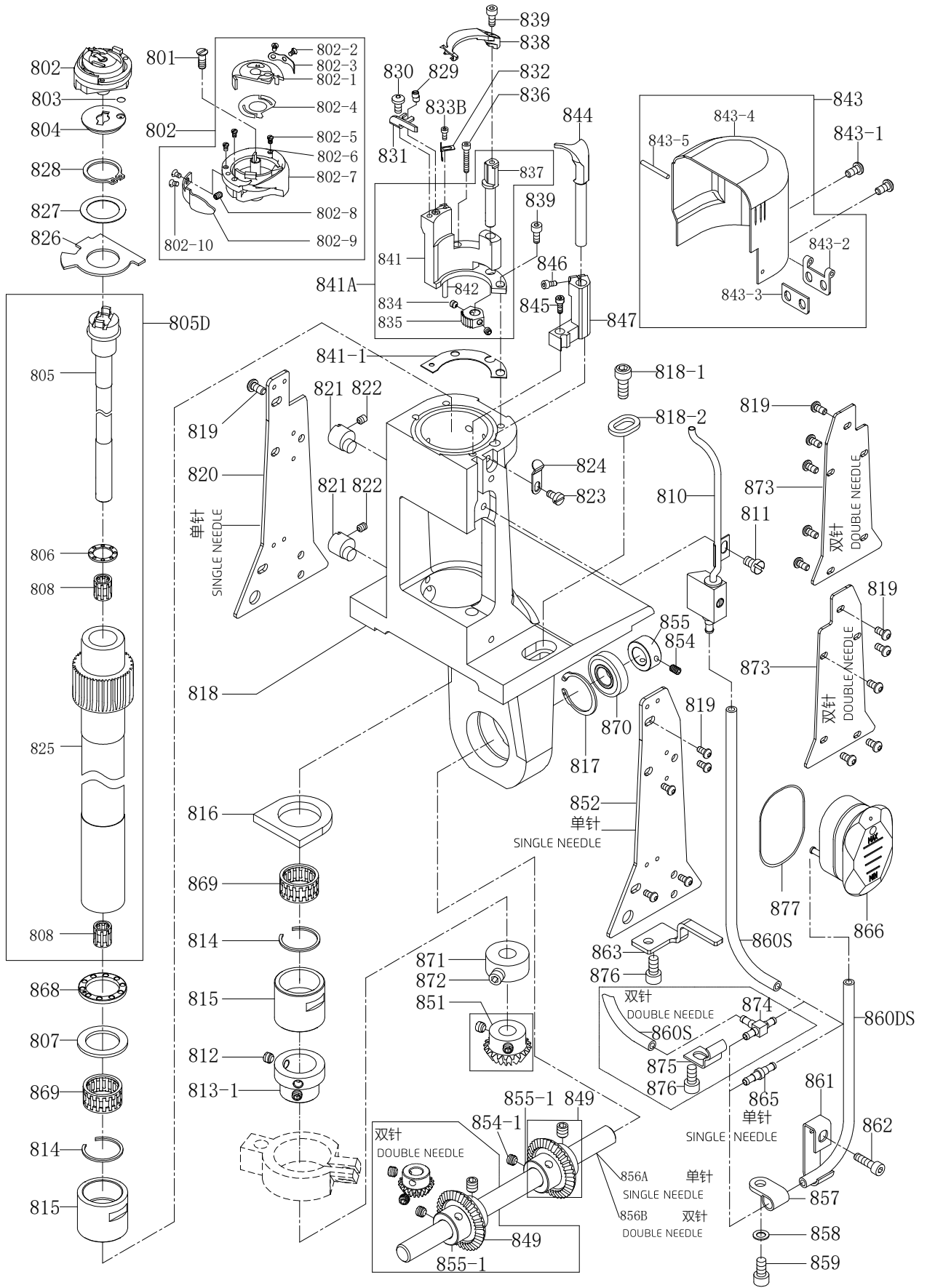
## 8 右边座机构

## Right side bracket mechanism

序号 NO.	件号 Part No.	零部件名称 PartName	零件描述 Description	数量 Amt.		备注
				S5-91	S5-92	
801	1550NS11014	一字沉头螺钉	Screw pan	1	1	
802	15521800100	旋梭组件	Hook asm	1	1	
803	O01154	O型圈	O-ring	1	1	
804	155209013	大釜护盖	Cauldron fender	1	1	
805D	15520201400	单针釜轴套管组件	Hook driver	1	1	
807	155228002	轴承垫片	Bearing gasket	1	1	
810	15522100200	油管(组件)	Tubing (asm)	1	1	
811	1550NS11013	一字圆柱头螺钉	Screw	1	1	
812	1550NS14001	内六角凹端紧定螺钉M6×0.75×6	Screw pan M6×0.75×6	2	2	
813-1	155208002	套管下紧圈	Running casing	1	1	
814	155229001	卡簧	Circlip	2	2	
815	155203009	斧轴套管	Axe shaft casing	2	2	
816	155223001	油棉垫	Oil cotton pad	1	1	
817	H01107	孔用弹性挡圈28	Circlips for hole 28	1	1	
818	930000057	右边座	Right side seat (spray paint)	1	1	喷漆
818-1	S05963	内六角圆柱头螺钉M6×20(镀镍)	Screw pan M6×20(Nickelpated)	2	2	
818-2	155028002	垫片	Washer	2	2	
819	S17883	内六角平圆头螺钉M4×8(镀镍)	Screw pan M4×8(Nickelpated)	10	10	
820	930000058	前边盖板	Front side cover (spray paint)	1	0	喷漆
821	155026003	调整销	Adjustig pin	2	2	
822	S10076	内六角凹端紧定螺钉M4×6	Screw pan M4×6	2	2	
823	1552NS11001	开槽圆柱头螺钉	Screw	1	1	
824	155212028	弹簧板	Spring plate	1	1	
826	155222001	橡皮垫	Rubber mat	1	1	
827	155228003	垫片	Washer	1	1	
828	H03069	轴用弹性挡圈20	Circlips for shaft 20	1	1	
829	155226008	调节销	Adjusting pin	1	1	
830	1557NS20001	定刀螺钉(进口)	Screw of fixed knife(Imported)	1	1	
831	155219001	定刀	Fixed knife	1	1	
832	155212029	弹片	Shrapnel	1	1	
833B	1557NS13003	夹线片螺钉(进口)	Screw of shrapnel (Imported)	1	1	
836	S05946	内六角圆柱头螺钉M4×25	Screw pan M4×25	1	1	
838	155219002	动刀	Moving knife	1	1	
839	S05943	内六角圆柱头螺钉M4×10	Screw pan M4×10	2	2	
841A	15520101900	刀座组件	Tool holder assembly	1	1	
841-1	155212030	刀座垫片	Gasket of Tool holder	1	1	
843	15521203100	大釜盖组件	Post cap	1	1	
843-1	S17883	内六角平圆头螺钉M4×8(镀镍)	Screw pan M4×8(Nickelpated)	2	2	
844	155202015	牛角	Rotating hook opener	1	1	
845	S05944	内六角圆柱头螺钉M4×12	Screw pan M4×12	1	1	
846	S05949	内六角圆柱头螺钉M4×8	Screw pan M4×8	1	1	
847	155209014	牛角固定座	Rotating hook opener bracket	1	1	
849	155025003	大齿轮	Bevel gear(large)	1	2	
851	155025004	小齿轮	Bevel gear(small)	1	1	
852	930000059	后边盖板	Back side cover (spray paint)	1	0	喷漆
854	1550NS14001	内六角凹端紧定螺钉M6×0.75×6	Screw pan M6×0.75×6	2	2	
854-1	1550NS14001	内六角凹端紧定螺钉M6×0.75×6	Screw pan M6×0.75×6	2	4	
855	155208005	定环	Fixed ring	1	1	
855-1	155008006	定环	Fixed ring	1	2	
856A	155202016	万向连接轴	Universal connecting shaft	1	0	
856B	155202017	万向连接轴	Universal connecting shaft	0	1	

# 8 右边座机构

Right side barcket mechanism



## 8 右边座机构

### Right side bracket mechanism

序号 NO.	件号 Part No.	零部件名称 PartName	零件描述 Description	数量 Amt.		备注
				S5-91	S5-92	
857	155211010	油管护架	Tubing guard	1	1	
858	W01145	平垫圈M4	Flat washer M4	1	1	
859	S05949	内六角圆柱头螺钉M4×8	Screw pan M4×8	1	1	
860DS	155221006	油管(600mm)	Tubing (600mm)	1	1	
860S	155221001	油管	Tubing	1	2	
861	155212033	线卡	Ply-yard drill	1	1	
862	S05945	内六角圆柱头螺钉M4×16	Screw pan M4×16	1	1	
863	155212034	护线架	Thread guard	1	1	
865	155236001	油管接头	The tubing connector	1	0	
866	155211011	油镜	Oil mirror	1	1	
868	155224013	平面轴承	Plane bearing	1	1	
869	155224014	滚针培林	Needle bearing	2	2	
870	B01046	滚珠培林(6001-2RZ/Z2)	Ball bearing(6001-2RZ/Z2)	1	1	
871	155208006	定环	Stationary ring	1	1	
872	S09174	内六角平端紧定螺钉M6×0.75×4	Screw pan M6×0.75×4	2	2	
873	930000060	双针边盖板	Side cover (Double needle)	0	2	
874	155236002	油管接头 三通	Oil pipe(tee joint)	0	1	
875	155212036	线卡	Ply-yard drill	0	1	
876	S05949	内六角圆柱头螺钉M4×8	Screw pan M4×8	1	2	
877	O01148	O型圈 32×1	O-ring 32×1	1	1	





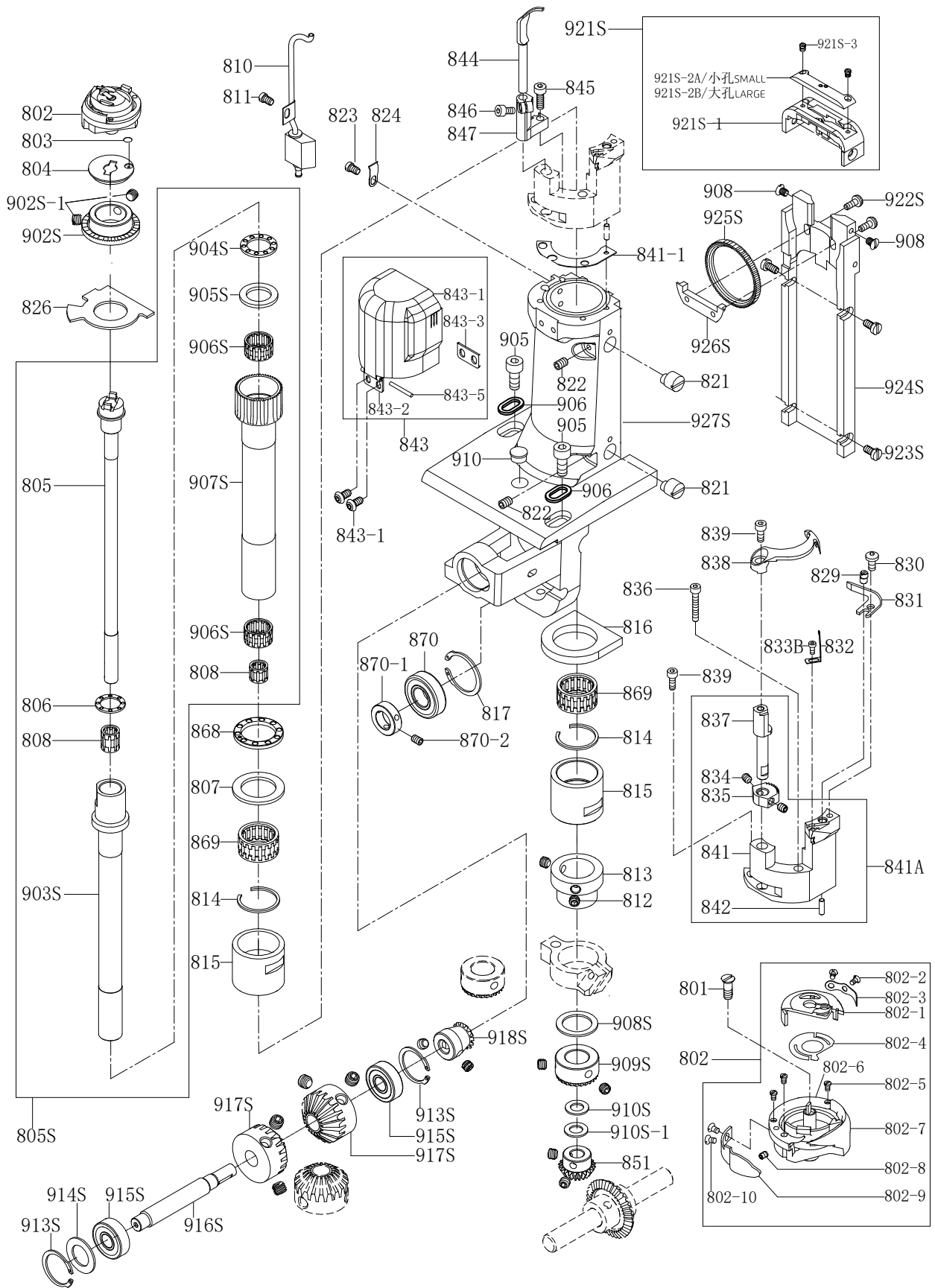
## 9 单针中座及下倒缝机构 (S5-91)

### Single needle central bracket mechanism

序号 NO.	件号 Part No.	零部件名称 PartName	零件描述 Description	数量 Amt.		备注
				S5-91	S5-92	
727	155724002	滚针培林 进口	Needle bearing	2	0	
732	155023003	油棉垫	Oil cotton pad	4	0	
817	H01107	孔用弹性挡圈28	Circlips for hole 28	1	0	
870	B01046	滚珠培林(6001-2RZ/Z2)	Ball bearing(6001-2RZ/Z2)	1	0	
870-1	155208007	定环	Stationary ring	1	0	
870-2	S10075	内六角凹端紧定螺钉M4×5	Screw pan M4×5	2	0	
901	15571500100	单针针板(带孔)	Throat plate	1	0	
902	155028002	垫片	Washer	2	0	
903	S05952	内六角圆柱头螺钉M5×12	Screw pan M5×12	2	0	
904	1550NS11015	一字圆柱头螺钉	Screw	1	0	
905	S05963	内六角圆柱头螺钉M6×20(镀镍)	Screw pan M6×20(Nickelpated)	2	0	
906	155028002	垫片	Washer	2	0	
907	155026005	调整销	Adjustig pin	1	0	
908	1557NS17001	针板座螺钉(进口)	Screw(Imported)	2	0	
909	S10077	内六角凹端紧定螺钉M4×8	Screw pan M4×8	1	0	
910	155211003	油盖	Rubber plug	1	0	
910DG	930000368	单针中座	Support plate	1	0	喷漆
911DG	155725001	中座小齿轮	Bevel gear	1	0	
912DG	155725002	中座大齿轮	Bevel gear	2	0	
913DG	155704003	摆杆座	Swing rod seat	1	0	
914DG	S05943	内六角圆柱头螺钉M4×10	Screw pan M4×10	2	0	
915DG	S10076	内六角凹端紧定螺钉M4×6	Screw pan M4×6	1	0	
916F	15572400300	单向培林轴组件	Unidirectional pellinx assembly	1	0	
918DG	S05940	内六角圆柱头螺钉M3×5	Screw pan M3×5	2	0	
919DG	P01082	圆柱销3×8 h6级	Cylindrical pin 3×8	2	0	
920DG	155704002	下倒缝摆杆	Lower back seam swing bar	1	0	
921DG	155704004	拉簧固定座	Spring fixing plate	1	0	
923DG	155727001	拉簧	Tension spring	1	0	
924DG	S05942	内六角圆柱头螺钉M3×8	Screw pan M3×8	1	0	
925DG-1	155205002	万向连杆A	Universal connecting rod A	1	0	
925DG-2	155205003	万向连杆B	Universal connecting rod B	1	0	
926DG	H03068	轴用弹性挡圈16	Circlips for shaft 16	1	0	
928DG	155209005	摆杆连接块	Connecting block of swing bar	1	0	
929DG	155212022	垫片	Washer	1	0	
930DG	155727002	锥形弹簧	Conical spring	1	0	
931DG	155712003	电磁铁固定板	Electromagnet fixed plate	1	0	
940DG	155726001	圆柱销	Cylindrical pin	1	0	
942DG	S05991	内六角圆柱头螺钉M3×20	Screw pan M3×20	1	0	
943DG	N01105	六角螺母M3	Nut M3	1	0	
944DG	W01146	平垫圈M5	Flat washer M5	3	0	
946DG	W01144	平垫圈M3	Flat washer M3	1	0	
915	S10075	内六角凹端紧定螺钉M4×5	Screw pan M4×5	2	0	
916	155203010	套管	Casing	1	0	
916A	155003009	下套管	Running casing	1	0	
916C	155224015	滚针培林	Needle bearing	1	0	
917	155002005	中座轴	Shaft	1	0	
918	S10078	内六角凹端紧定螺钉M5×4	Screw pan M5×4	4	0	
919	155009009	轴连接器	Shaft connector	2	0	
920	15522500800	单针送金组件	Single needle feeding component	1	0	
921	155011005	塑料接头	Plastic connector	1	0	
913S	155012014	C型扣环	C-shaped buckle	2	0	
915S	155024012	轴承608ZZ	Bearing 608ZZ	1	0	
915F	B04094	轴承6900-ZZ	Bearing 6900-ZZ	1	0	
928S	155224016	单向轴承座 NA/SK	One-way bearing holder NA/SK	1	0	
928S-1	155703010	单向轴承座 /NA	One-way bearing holder /NA	1	0	
930S	1557NS11001	一字圆柱头螺钉(短)	Screw pan	2	0	
941S	W01145	平垫圈M4	Flat washer M4	2	0	
942S	S05949	内六角圆柱头螺钉M4×8	Screw pan M4×8	2	0	
948S	15523000300	下倒缝电磁铁	Needle pendulum electromagnet	1	0	
951S	S05951	内六角圆柱头螺钉M5×10	Screw pan M5×10	3	0	

# 10 双针左边座及中座机构 (S5-92)

Double needle left side bracket & central bracket mechanism



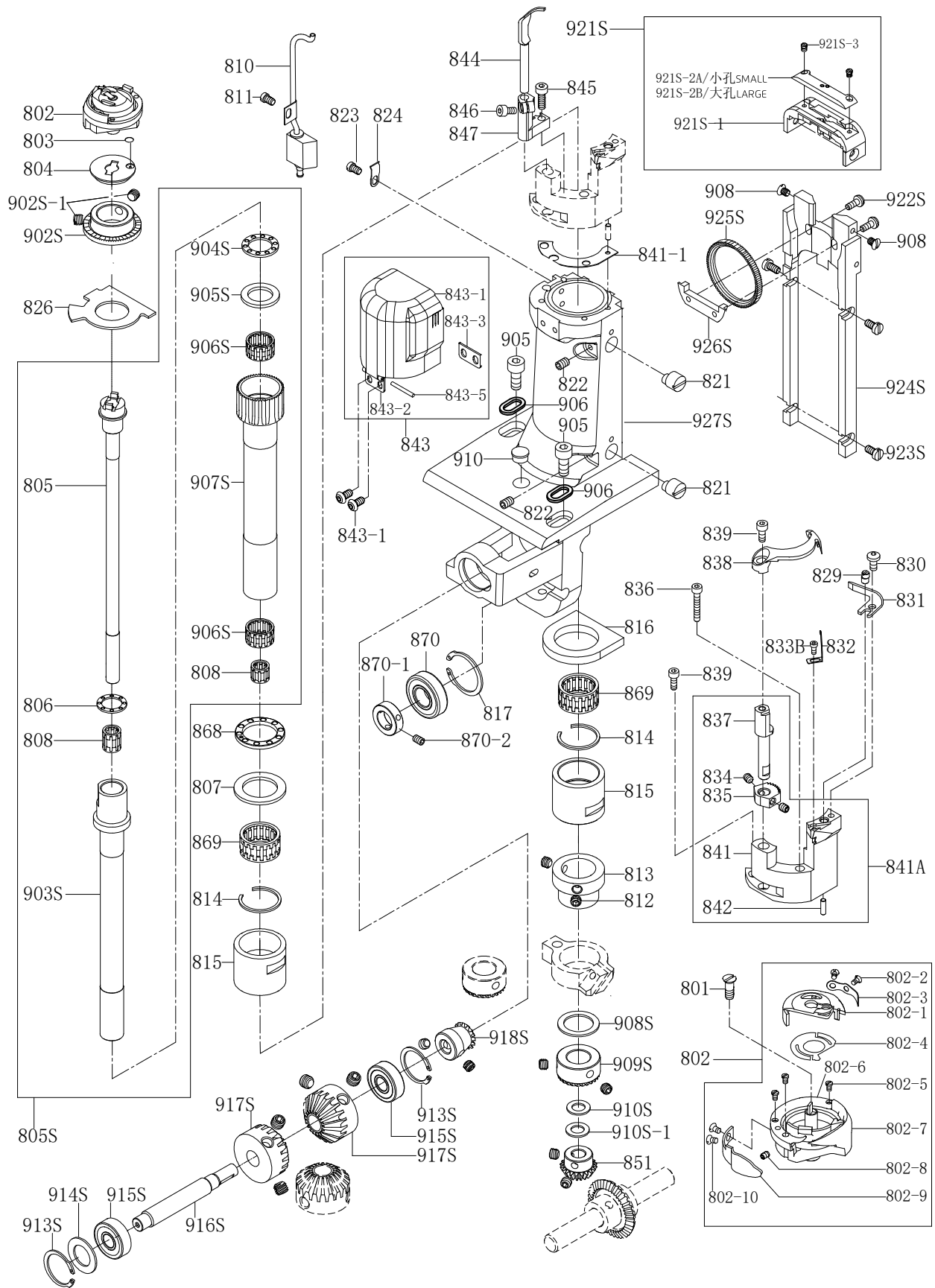
## 10 双针左边座及中座机构 (S5-92)

## Double needle left side bracket &amp; central bracket mechanism

序号 NO.	件号 Part No.	零部件名称 PartName	零件描述 Description	数量 Amt.		备注
				S5-91	S5-92	
801	1550NS11014	一字沉头螺钉	Screw pan	0	1	
802	15521800100	旋梭组件	Hook asm	0	1	
803	O01154	O型圈	O-ring	0	1	
804	155209013	大釜护盖	Cauldron fender	0	1	
805S	15530200100	双针釜轴套管组件	Hook driver(Double needle)	0	1	
807	155228002	轴承垫片	Bearing gasket	0	1	
810	15522100200	油管(组件)	Tubing (asm)	0	1	
811	1550NS11013	一字圆柱头螺钉	Screw	0	1	
812	1550NS14001	内六角凹端紧定螺钉M6×0.75×6	Screw pan M6×0.75×6	0	2	
813-1	155208002	套管下紧圈	Running casing	0	1	
814	155229001	卡簧	Circlip	0	2	
815	155203009	斧轴套管	Axe shaft casing	0	2	
816	155223001	油棉垫	Oil cotton pad	0	1	
817	H01107	孔用弹性挡圈28	Circlips for hole 28	0	1	
821	155026003	调整销	Adjustig pin	0	2	
822	S10076	内六角凹端紧定螺钉M4×6	Screw pan M4×6	0	2	
823	1552NS11001	开槽圆柱头螺钉	Screw	0	1	
824	155212028	弹簧板	Spring plate	0	1	
826	155222001	橡皮垫	Rubber mat	0	1	
829	155226008	调节销	Adjustig pin	0	1	
830	1557NS20001	定刀螺钉(进口)	Screw of fixed knife(Imported)	0	1	
831	155219001	定刀	Fixed knife	0	1	
832	155212029	弹片	Shrapnel	0	1	
833B	1557NS13003	夹线片螺钉(进口)	Screw of shrapnel (Imported)	0	1	
836	S05946	内六角圆柱头螺钉M4×25	Screw pan M4×25	0	1	
838	155219002	动刀	Moving knife	0	1	
839	S05943	内六角圆柱头螺钉M4×10	Screw pan M4×10	0	2	
841A	15520101900	刀座组件	Tool holder assembly	0	1	
841-1	155212030	刀座垫片	Gasket of Tool holder	0	1	
843	15521203100	大釜盖组件	Post cap	0	1	
843-1	S17883	内六角平圆头螺钉M4×8(镀镍)	Screw pan M4×8(Nickelpated)	0	2	
844	155202015	牛角	Rotating hook opener	0	1	
845	S05944	内六角圆柱头螺钉M4×12	Screw pan M4×12	0	1	
846	S05992	内六角圆柱头螺钉M4×6	Screw pan M4×6	0	1	
847	155209014	牛角固定座	Rotating hook opener bracket	0	1	
851	155025004	小齿轮	Bevel gear(small)	0	1	
868	155224013	平面轴承	Plane bearing	0	1	
869	155224014	滚针轴承	Needle bearing	0	2	
870	B01046	滚珠培林(6001-2RZ/Z2)	Ball bearing(6001-2RZ/Z2)	0	1	
870-1	155208007	定环	Stationary ring	0	1	
870-2	S10075	内六角凹端紧定螺钉M4×5	Screw pan M4×5	0	2	
902S	155225009	送料平面齿轮	Feeding plane wheel	0	1	
902S-1	S09174	内六角平端紧定螺钉M6×0.75×4	Screw pan M6×0.75×4	0	2	
905	S05963	内六角圆柱头螺钉M6×20(镀镍)	Screw pan M6×20(Nickelpated)	0	2	
906	155028002	垫片	Washer	0	2	
908	1557NS17001	针板座螺钉(进口)	Screw(Imported)	0	2	
908S	155228007	调整垫片	Adjusting washer	0	1	
909S	155225010	送料大齿轮	Big gear	0	1	
910	155211003	油盖	Rubber plug	0	1	
910S	155128001	调整垫片	Adjusting washer	0	2	
910S-1	155228008	垫片	Washer	0	1	

# 10 双针左边座及中座机构 (S5-92)

Double needle left side bracket & central bracket mechanism



## 10 双针左边座及中座机构 (S5-92)

### Double needle left side bracket & central bracket mechanism

序号 NO.	件号 Part No.	零部件名称 PartName	零件描述 Description	数量 Amt.		备注
				S5-91	S5-92	
913S	155012014	C型扣环	C-shaped buckle	0	2	
914S	155228006	调整垫片	Adjusting washer	0	2	
915S	155024012	轴承608ZZ	Bearing 608ZZ	0	2	
916S	155002006	轴承轴	Silvicultural axis	0	1	
917S	155225006	锥形齿轮	Bevel gear	0	2	
918S	155225011	送料齿轮	Gear	0	1	
921S	15531500100	双针针板组件	Throat plate(Double needle)	0	1	
922S	S05943	内六角圆柱头螺钉M4×10	Screw pan M4×10	0	2	
923S	1553NS11002	开槽圆柱头螺钉	Screw	0	4	
924S	155301001	双针中座	Support plate(Double needle)	0	1	
925S	155225012	送料齿轮	Gear	0	1	
926S	155209021	送料轮固定板	Fixing plate	0	1	
927S	930000062	双针左边座	Double needle left side seat	0	1	喷漆

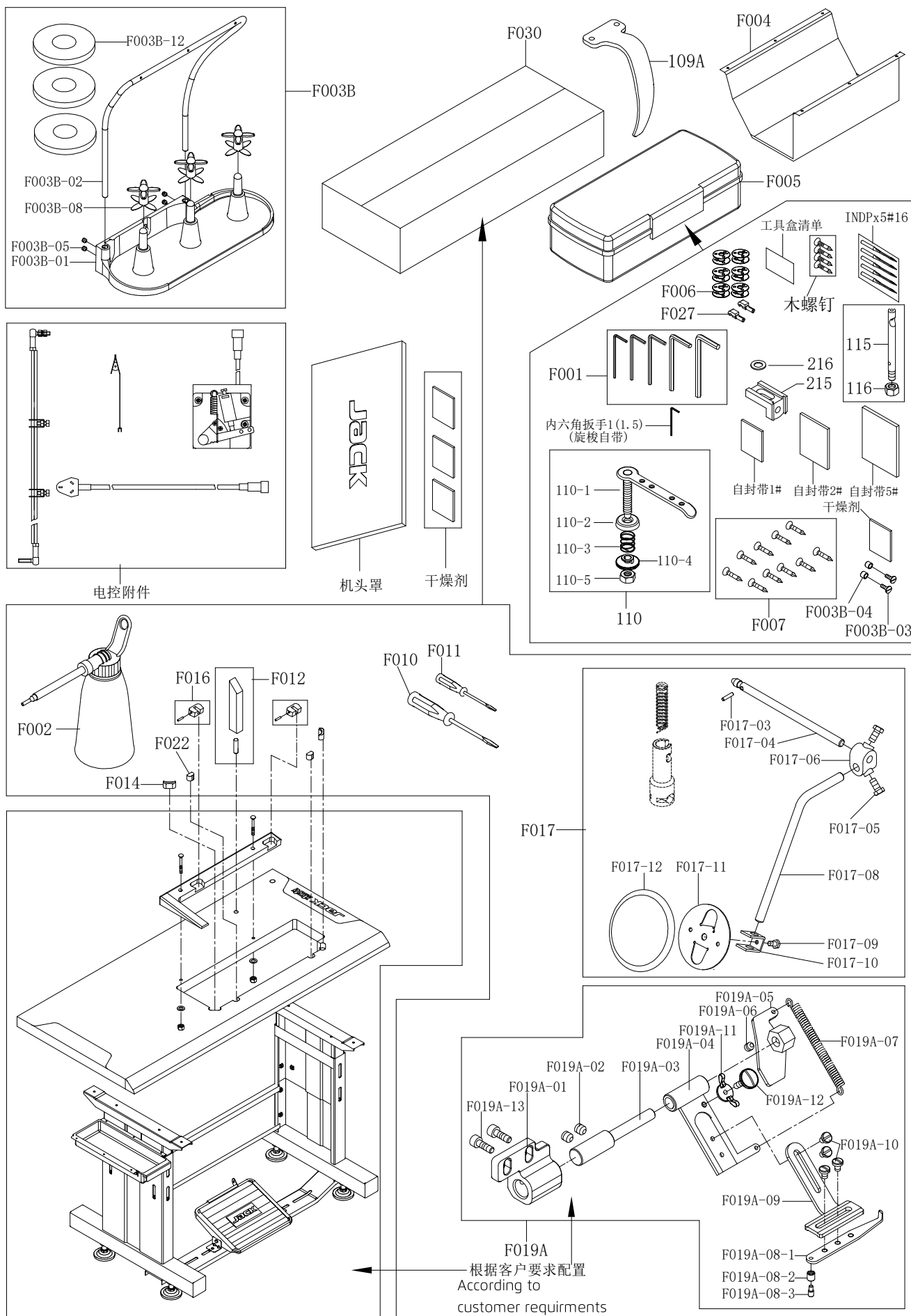


## 11 双针倒针机构 (S5-92)

## Double needle reverse stitching mechanism

序号 NO.	件号 Part No.	零部件名称 PartName	零件描述 Description	数量 Amt.		备注
				S5-91	S5-92	
727	155724002	滚针培林 进口	Needle bearing	0	2	
732	155023003	油棉垫	Oil cotton pad	0	2	
911S	S10080	内六角凹端紧定螺钉M5×6	Screw pan M5×6	0	1	
913S	155012014	C型扣环	C-shaped buckle	0	2	
914S	155228006	调整垫片	Adjusting washer	0	2	
915S	155024012	轴承608ZZ	Bearing 608ZZ	0	2	
916S	155002006	轴承轴	Silvicultural axis	0	1	
919S	155225007	锥形齿轮	Bevel gear	0	1	
928S	155224016	单向轴承座 NA/SK	One-way bearing holder NA/SK	0	2	
929S	155205007	万向连杆A	Universal connecting rod	0	1	
930S	1557NS11001	一字圆柱头螺钉(短)	Screw pan	0	1	
931S	155201024	倒针座	Inverted needle seat	0	1	
931S-1	S05240	内六角圆柱头螺钉M6×20	Screw pan M6×20	0	2	
931S-2	W01147	平垫圈M6	Flat washer M6	0	2	
932S	S10073	内六角凹端紧定螺钉M4×16	Screw pan M4×16	0	1	
933S	N01103	六角螺母M4	Nut M4	0	1	
934S	S05951	内六角圆柱头螺钉M5×10	Screw pan M5×10	0	1	
935S	155226011	滑动销	Pin	0	1	
935S-1	O01155	O型圈	O-ring	0	1	
936S	S05943	内六角圆柱头螺钉M4×10	Screw pan M4×10	0	2	
937S	155212039	滑块限位座	Restricted seat	0	1	
937S-1	155221007	滑块限位座减震套	Buffer sleeve of restricted seat	0	1	
938S	155226012	调节销	Adjustig pin	0	1	
939S	155227017	压簧	Compression spring	0	2	
940S	1550NS20001	开槽无头轴位螺钉	Screw	0	1	
941S	W01145	平垫圈M4	Flat washer M4	0	4	
942S	S05949	内六角圆柱头螺钉 M4×8	Screw pan M4×8	0	2	
943S	155209017	倒针滑块	Sliding block	0	1	
944S	155209006	顶杆挡块	Block	0	1	
945S	S05942	内六角圆柱头螺钉M3×8	Screw pan M3×8	0	2	
946S	155220001	螺钉	Screw	0	1	
947S	155212040	顶杆	Knock-out pin	0	1	
948S	15523000300	下倒缝电磁铁	Electromagnet	0	1	
950C	155212037	下倒针电磁铁座	Electromagnet fixed plate	0	1	
951S	S05951	内六角圆柱头螺钉M5×10	Screw pan M5×10	0	3	

# 12 随机附件 Accessories





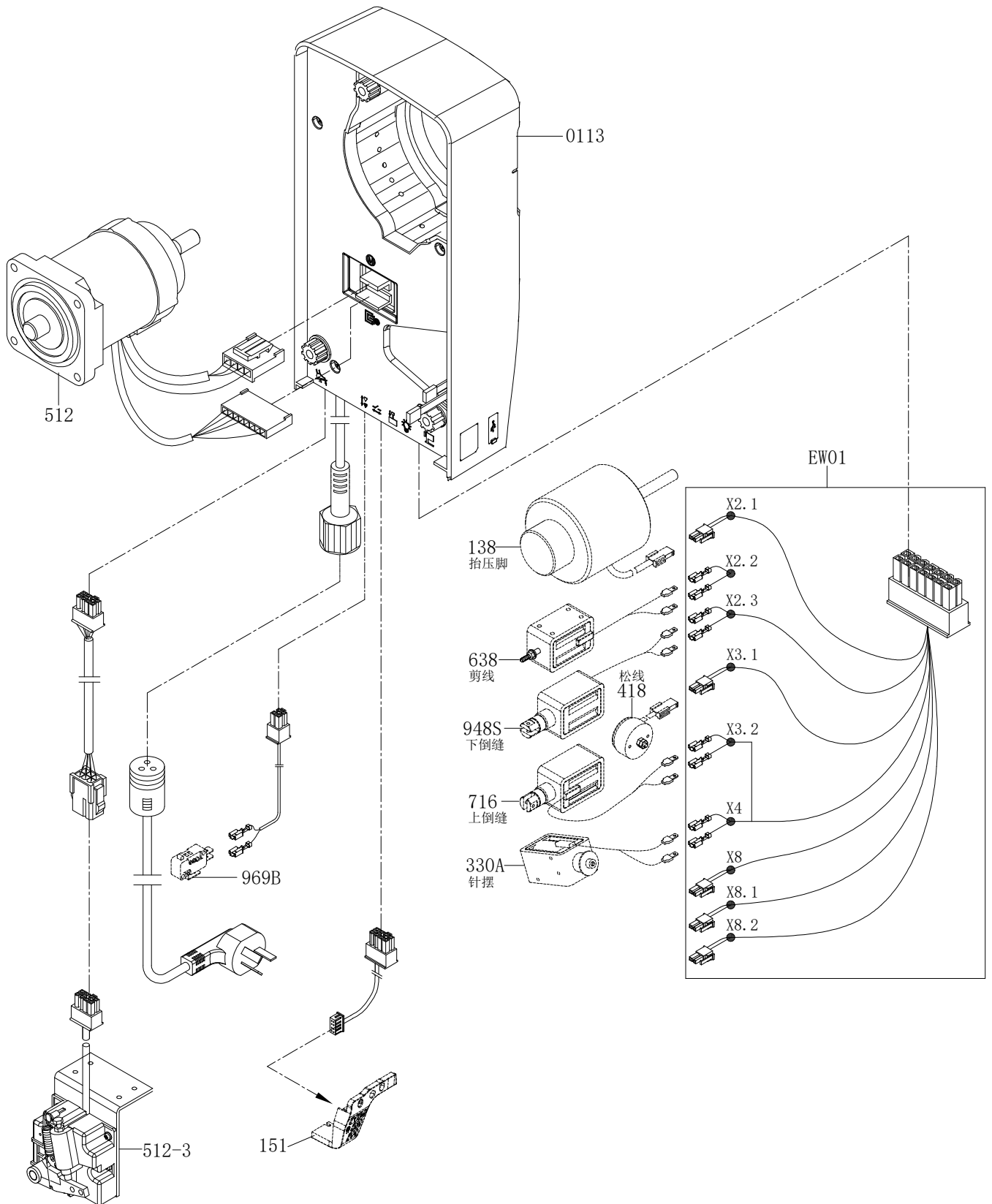
## 12 随机附件

## Accessories

序号 NO.	件号 Part No.	零部件名称 PartName	零件描述 Description	数量 Amt.		备注
				S5-91	S5-92	
109A	155211002	挑线杆防护罩	Thread takeup lever cover	1	1	
110	155213004	绕线夹线器组件	Bobbin thread tension asm	1	1	
115	155213005	穿线杆	Spool pin	1	1	
116	N01115	六角螺母M6(镀镍)	Nut M6(Nickelpated)	1	1	
215	155009002	顶针座	Thimble seat	1	0	
216	155228010	平垫圈	Flat washer	0	1	
346	155217001	机针(INDP×5#16)	Needle INDP×5#16	5	10	
F001	155031001	内六角扳手(2mm)	Allen key (2mm)	1	1	
	155031002	内六角扳手(2.5mm)	Allen key (2.5mm)	1	1	
	155031003	内六角扳手(3mm)	Allen key (3mm)	1	1	
	155031004	内六角扳(4mm)	Allen key (4mm)	1	1	
	155031005	内六角扳手(5mm)	Allen key (5mm)	1	1	
	155731007	内六角扳手(1.5mm)	Allen key (1.5mm)	1	1	
F002	155231002	横嘴油壶	Horizontal mouth oil pot	1	1	
F003B-01	155231016	线架盘	Thread stand rack	1	1	
F003B-02	155231028	线架	Thread stand	1	1	
F003B-03	1552NS11004	线架盘螺钉	Screw of thread stand	2	2	
F003B-04	155231006	尼龙挡圈	Nylon retaining ring	2	2	
F003B-08	155231017	支撑芯	Stand rod	3	3	
F003B-12	155231027	线盘垫	Spongy cushion	3	3	
F004	155231009	油盘	Oil pan	1	1	
F005	155231010	工具箱	Tool box	1	1	
	155731005	工具箱清单	Tool box list	1	1	
F006	155231011	梭子	Shuttle	6	9	
F007	155226001	圆钢钉8分	Round steel nail	0.05Kg		
	155231035	自封袋1#	Self sealing bag1#	0.01	0.01	
	155231043	自封袋2#	Self sealing bag2#	0.02	0.02	
	155231037	自封袋5#	Self sealing bag5#	0.01	0.01	
F010	155031007	螺钉刀(中)	Screwdriver (middle)	1	1	
F011	155031006	螺钉刀(小)	Screwdriver (small)	1	1	
F012	155232023	枕木组件	Sleeper component	1	1	
F014	155031011	橡胶垫	Rubber mat	2	2	
F016	155231012	后纽扣橡胶垫	Rubber mat of rear button	2	2	
F017	155231013	脚弓组	Ankle arch group	1	1	
F019A	155231014	靠边组件	Edge assembly	1	1	
F022	155231015	橡胶垫	Rubber mat	2	2	
F027	155031013	后纽扣	Rear button	2	2	
F030	155231001	附件纸箱	Accessory box	1	1	
	155531004	附件纸板(L型板)	Accessory carton	1	1	
	155231024	机头罩	Nose covering	1	1	
	155231029	木螺钉	Wood screw	4	4	
	155231020	合格证	Certificate	1	1	
	155231021	罗拉车纸箱	Roller carton	1	1	
	15523100700	机身泡沫组件	Foam for machine	1	1	
	155731003	产品使用说明书&产品零件图册	Manual book & parts book	1	1	
	155231005	电控附件	Electric control accessories	1	1	
	155231042	电控说明书	Electric control manual	1	1	
	155231033	PE袋	PE Bag	1	1	
	155231039	硅胶干燥剂	Silica gel desiccant	10	10	
	155731006	装箱清单	Packing list	1	1	
	155231040	条形码标签	Bar code	1	1	
	155231041	挂牌绳卡	Tag needle	1	1	

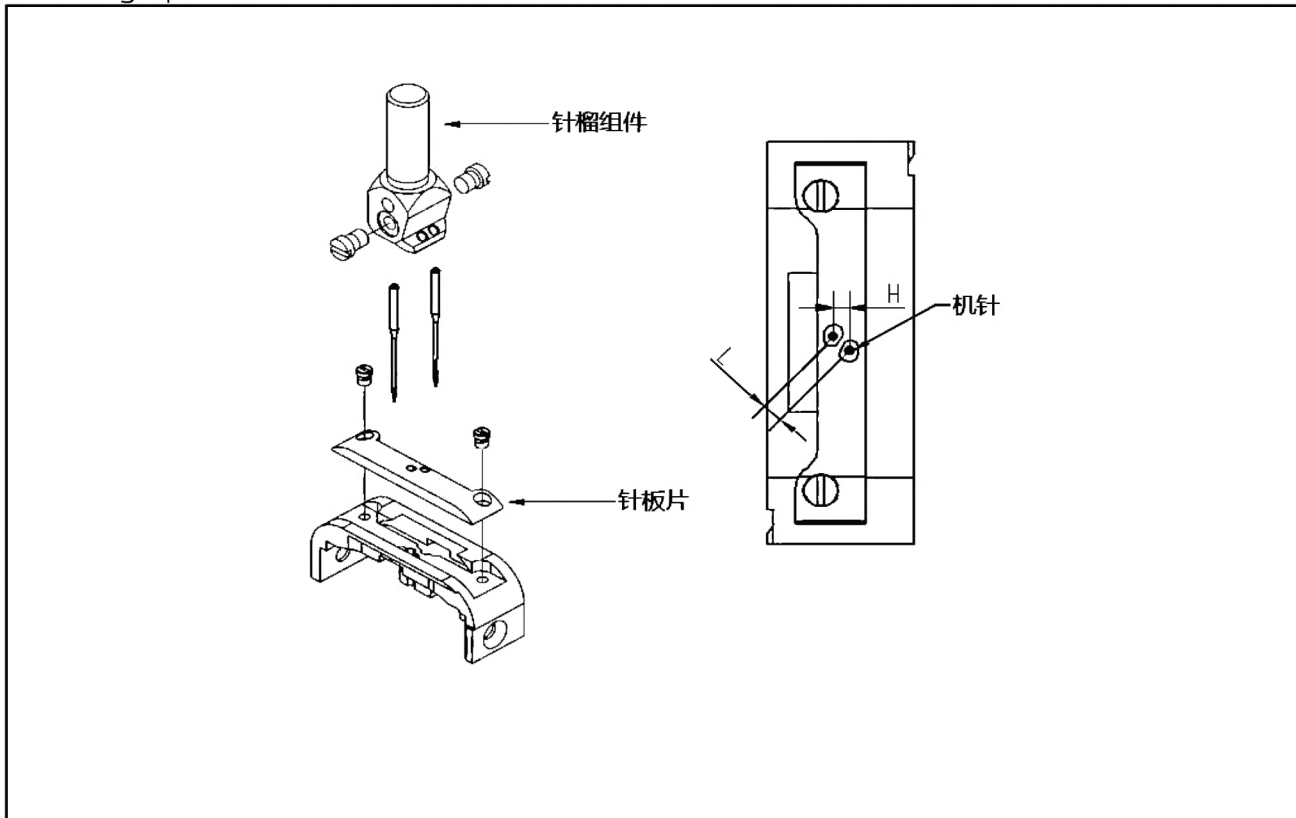
# 13 电器连接图

Electricity elements fig



# 14 双针针位组零件明细

## Gauge parts list



机针间距H Needle gauge (mm)	机针 Needle	针板片 Needle plate	针榴组件 Needle holder		备注
			标配 Standard	选配 Apolegamic	
1.2-1.6	155217001(#16)	(1.2-1.6)155315006	(2.4)15531700300	(2.8)15531700400	
2.2-2.6	155317007(#21)	(2.0-2.4)155315007	(2.8)15531700400	(3.2)15531700100	
2.8-3.2	155317007(#21)	(2.8-3.2)155315008	(3.6)15531700500		针板组件(特殊配置)



杰克缝纫机  
全球销量遥遥领先  
Leading in global sales

400-8876-858  
www.chinajack.com



JACK SEWING MACHINE CO.,LTD.

2020年5月份 Edition:May,2020

杰克缝纫机股份有限公司

浙江省台州市椒江区三甲东海大道东段1008号  
电话: 0086-576-88177788 8817789  
传真: 0086-576-88177758

产品标准代号: Q/TK007-2017  
资料如有更改, 恕不另行通知, 以实样为准

JACK SEWING MACHINE CO.,LTD.

NO.1008,Donghai Avenue East,Jiaojiang District,Taizhou City,Zhejiang  
TEL:0086-576-88177782 88177767 E-mail:sales@chinajack.com  
FAX:0086-576-88177787 www.chinajack.com

Standard code of the products:Q/TK 007-2017  
You will be not informed if the file has been revised.Please set sample as standard.